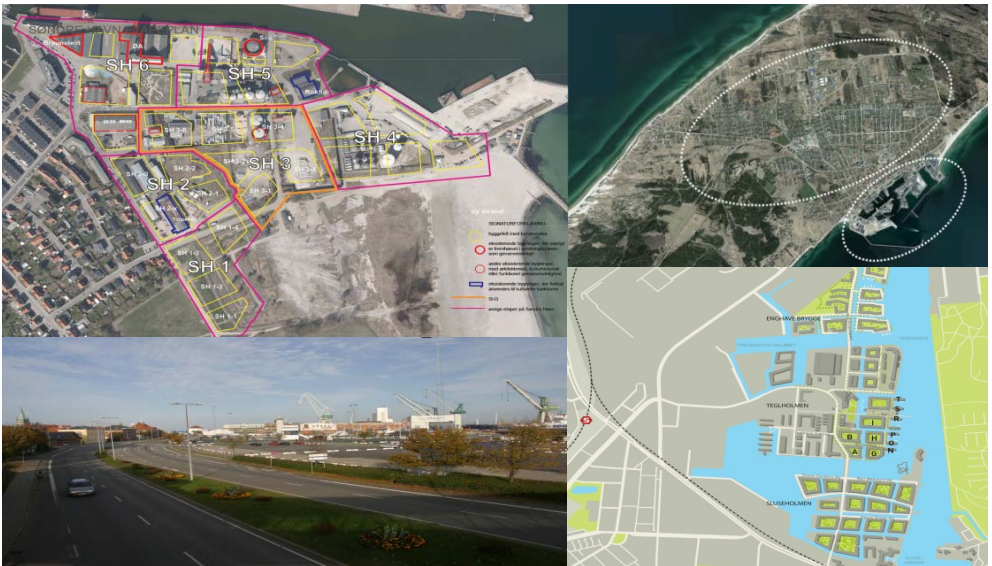


Connecting Harbour and City

How to make city and harbour development holistic, socially sustainable and growth-related?



MARINA Project

23rd February 2017 - Local Mobilisation and Mutual Learning Workshop

Phase 1. Aalborg University CPH, Copenhagen, Denmark

[Jesper Rohr Hansen \(jer@sbi.aau.dk\)](mailto:jer@sbi.aau.dk),

[Mette Mechlenborg \(mme@sbi.aau.dk\)](mailto:mme@sbi.aau.dk)



Harbour developments and Responsible Research and Innovation

In European coastal cities, harbours are currently used for various financial purposes. Most often cities will kick-start processes of redevelopment either to transform industrial areas into expensive housing areas, or to create synergy between port industries and city attractiveness.

On the basis of 3 examples of harbour developments, participants discussed how development can create as much societal value as possible. Participants were citizens, NGO's, leisure organisations, small businesses, students and local-democratic representatives.

The participants proposed solutions to three different themes:

- 1) How to create coherence for industry and citizens between old and new, and between city and harbour? How to attract people and alter actors' mindset?
- 2) How to ensure responsibility, ownership and citizen participation in high-profiled development projects? How to ensure that all actors are included?
- 3) How to ensure good standards in housing and urban life in newly-developed areas which tend to be dense and void of urban functions in order to maximize property investor's revenues?




Responsible Research and Innovation (RRI) engages and brings together all stakeholders, creates dialogue and facilitates knowledge-sharing. It ensures the sustainable use of natural resources and makes sure that the needs of citizens and society are integrated into research and innovation. Participants put forth proposals of collective solutions based on the six RRI dimensions:



Workshop Outcomes

The participants defined solutions for each theme, solutions that often require collaboration between many different actors. The graphic below presents the most specific solutions.

Each action was linked to several RRI dimensions. Given the framing of the workshop, requiring municipal planning and business-responsible authorities, the most prominent RRI dimensions were governance, participation and ethics.

Theme and solutions		
Theme 1: Coherence	Theme 2: Participation	Theme 3: The good life
Responsible Research & Innovation Dimensions		
		
<p>Ensure flexible and temporary housing solutions</p> <p>Develop new types of ownership forms, e.g. urban-industrial youth- and -student housing</p> <p>Think about new attractors and pop-up events</p> <p>Local government should facilitate a broader, city-wide vision for industrial harbours in order to activate stakeholders</p> <p>Define leadership</p>	<p>Place responsibility for maintaining novel harbour facilities (e.g. recreational areas)</p> <p>Regard all citizens as co-owners of a development project</p> <p>Use digital solutions, SoMe and apps, to spur broader civic and democratic engagement</p> <p>Include citizens throughout the entire harbour-development process</p>	<p>Make bureaucracy flexible in order to enable small-scale business development (e.g. pop-up food laboratories, small boutiques or fish selling)</p> <p>Utilize the watershed more offensively as a flexible resource for cultural events</p> <p>Create more urban life by ensuring higher degree of social mix and various housing forms, otherwise only airbnb tourists will stay there.</p>

The MARINA Project is funded by the EU Programme Horizon 2020. 14 partners across Europe are joining forces for a period of 36 months to bring together stakeholders around marine issues and societal challenges and propose RRI driven roadmaps of actions to respond to them.

45 workshops on marine issues in the European Union



-  Marine biotechnologies
-  Climate change
-  Deep-sea mining
-  Tourism and coastal cities
-  Renewable energy
-  Fishing and aquaculture
-  Sea transportation
-  Pollution caused by human, land and sea pressures

Do you want to learn more ? Register now on www.marinaproject.eu



Coordinator :
Fernando Ferri : fernando.ferri@irpps.cnr.it; marina.pro@irpps.cnr.it

