

Get started in Responsible Research and Innovation

# SEA TRANSPORTATION: Ships and Ports of the Future are Green



MARINA Project

17<sup>th</sup> May 2018 – International Mobilisation and Mutual Learning Workshop Phase 2

Estonian Maritime Academy, Tallinn, Estonia

[sander.kask@ahhaa.ee](mailto:sander.kask@ahhaa.ee)

# Sea Transportation

New technologic developments promise to make ships, ports and their construction and operation energy efficient, minimise pollution and thus lower the harm to the natural environment. Sustainability and smart solutions have become key elements in global marine transport. “Being green” is no longer only an ecological imperative, but the higher efficiency involved in innovative methods makes green operation also an economic standard.

13 participants from different stakeholder groups expressed their opinion in this participative workshop:



# Responsible Research and Innovation

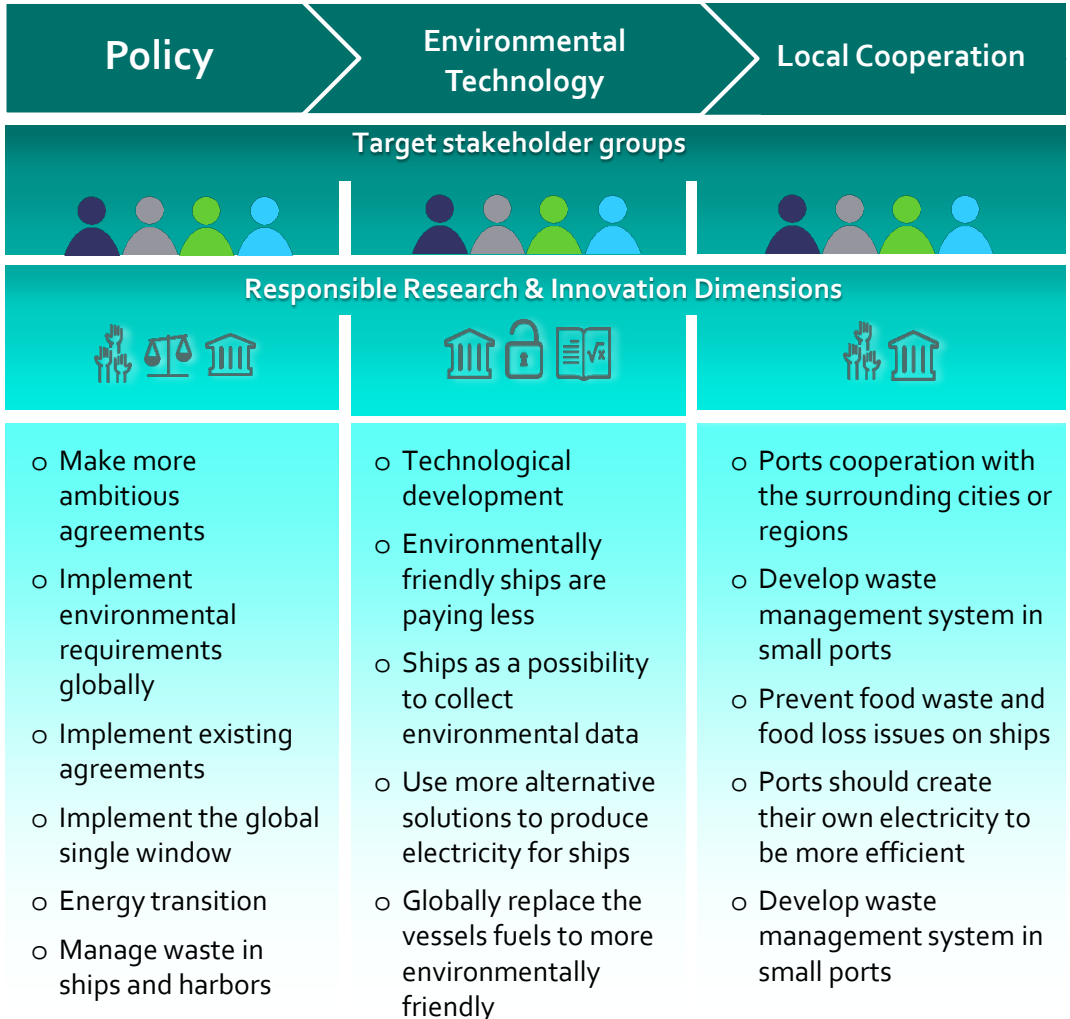
Responsible Research and Innovation (RRI) engages and brings together all stakeholders, creates dialogue and facilitates knowledge-sharing. It ensures the sustainable use of natural resources and makes sure that the needs of citizens and society are integrated into research and innovation. Participants put forth proposals of collective solutions based on the six RRI dimensions:



# Workshop Outcomes

The participants defined 3 main groups of actions. Each group calls for the combined actions of at least two target groups, which confirms the need for collaboration between stakeholders.

Each action was linked to several RRI dimensions, and **Governance** and **Sustainability** were the most important dimensions in this workshop.



The MARINA Project is funded by the EU Programme Horizon 2020. 14 partners across Europe are joining forces for a period of 36 months to bring together stakeholders around marine issues and societal challenges and propose RRI driven roadmaps of actions to respond to them.

## 45 workshops on marine issues in the European Union



- Marine biotechnologies
- Climate change
- Deep-sea mining
- Tourism and coastal cities
- Renewable energy
- Fishing and aquaculture
- Sea transportation
- Pollution caused by human, land and sea pressures

Do you want to learn more ? Register now on [www.marinaproject.eu](http://www.marinaproject.eu)



Coordinator :  
Fernando Ferri : [fernando.ferri@irpps.cnr.it](mailto:fernando.ferri@irpps.cnr.it); [marina.pro@irpps.cnr.it](mailto:marina.pro@irpps.cnr.it)

