

SEA TRANSPORTATION:

Turning sea transportation threats into sea transportation opportunities on the Baltic Sea



MARINA Project

8th February 2018 - Local Mobilisation and Mutual Learning Workshop Phase 2

Science Centre AHHA, Tartu, Estonia

sander.kask@ahha.ee

Sea Transportation

The economical promises of sea transport are huge: minimal infrastructure requirements, advancing cargo ship technology, unused transport capacity. But if you compare the net impact on the environment of different types of transportation, the winner is not so clear.

However transport by ships, loading in the docks and continuing on land are all interconnected with bottlenecks appearing if different sectors fail to work together.

16 participants from different stakeholder groups expressed their opinion in this participative workshop:



Responsible Research and Innovation

Responsible Research and Innovation (RRI) engages and brings together all stakeholders, creates dialogue and facilitates knowledge-sharing. It ensures the sustainable use of natural resources and makes sure that the needs of citizens and society are integrated into research and innovation. Participants put forth proposals of collective solutions based on the six RRI dimensions:

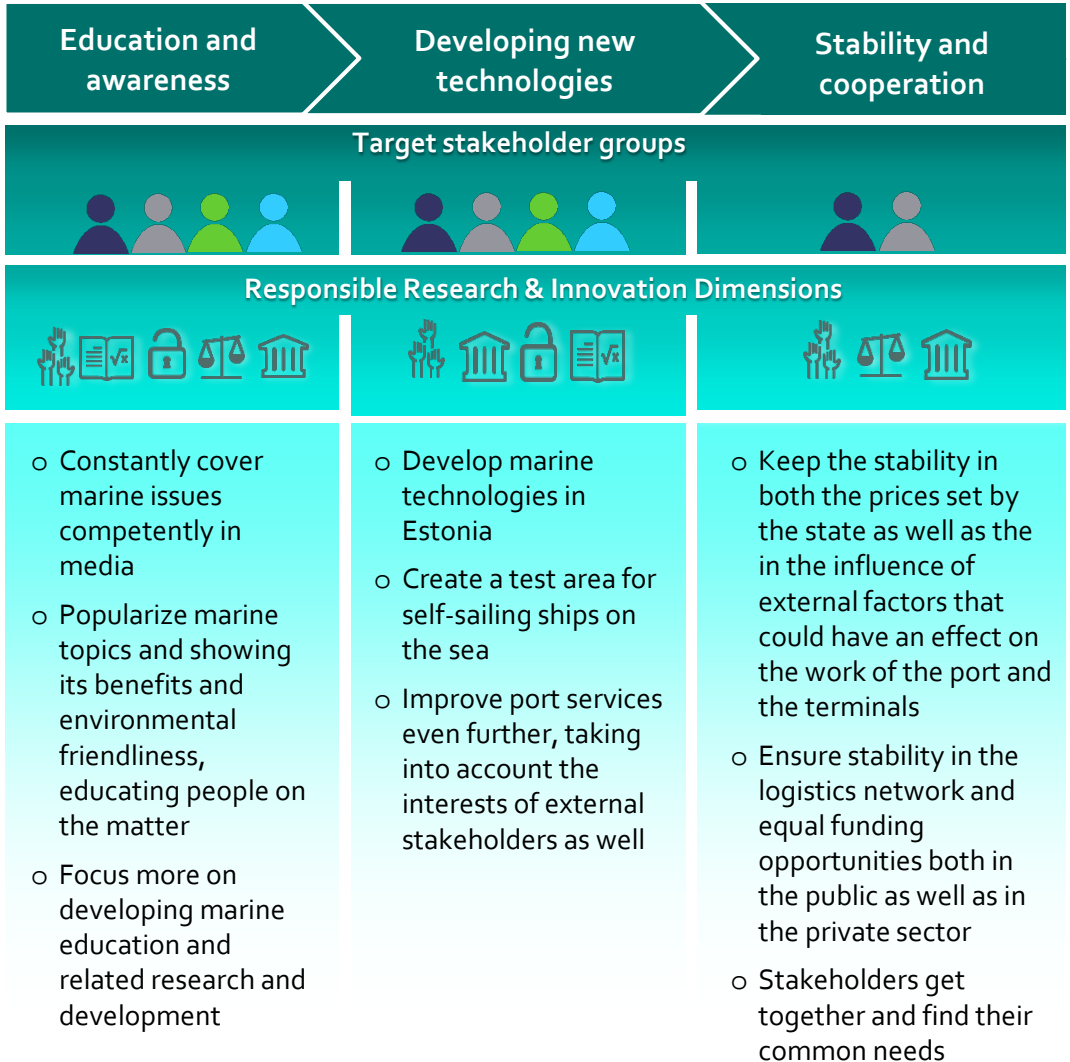


Pictograms courtesy of RRI Tools - <https://www.rri-tools.eu/>

Workshop Outcomes

The participants defined 3 main clusters of actions. Each group calls for the combined actions of at least two target groups, which confirms the need for collaboration between stakeholders.

Each action was linked to several RRI dimensions, and **Governance** and **Science Education** were the most important dimensions in this workshop.



The MARINA Project is funded by the EU Programme Horizon 2020. 14 partners across Europe are joining forces for a period of 36 months to bring together stakeholders around marine issues and societal challenges and propose RRI driven roadmaps of actions to respond to them.

45 workshops on marine issues in the European Union



-  Marine biotechnologies
-  Climate change
-  Deep-sea mining
-  Tourism and coastal cities
-  Renewable energy
-  Fishing and aquaculture
-  Sea transportation
-  Pollution caused by human, land and sea pressures

Do you want to learn more ? Register now on www.marinaproject.eu



Coordinator :
Fernando Ferri : fernando.ferri@irpps.cnr.it; marina.pro@irpps.cnr.it

